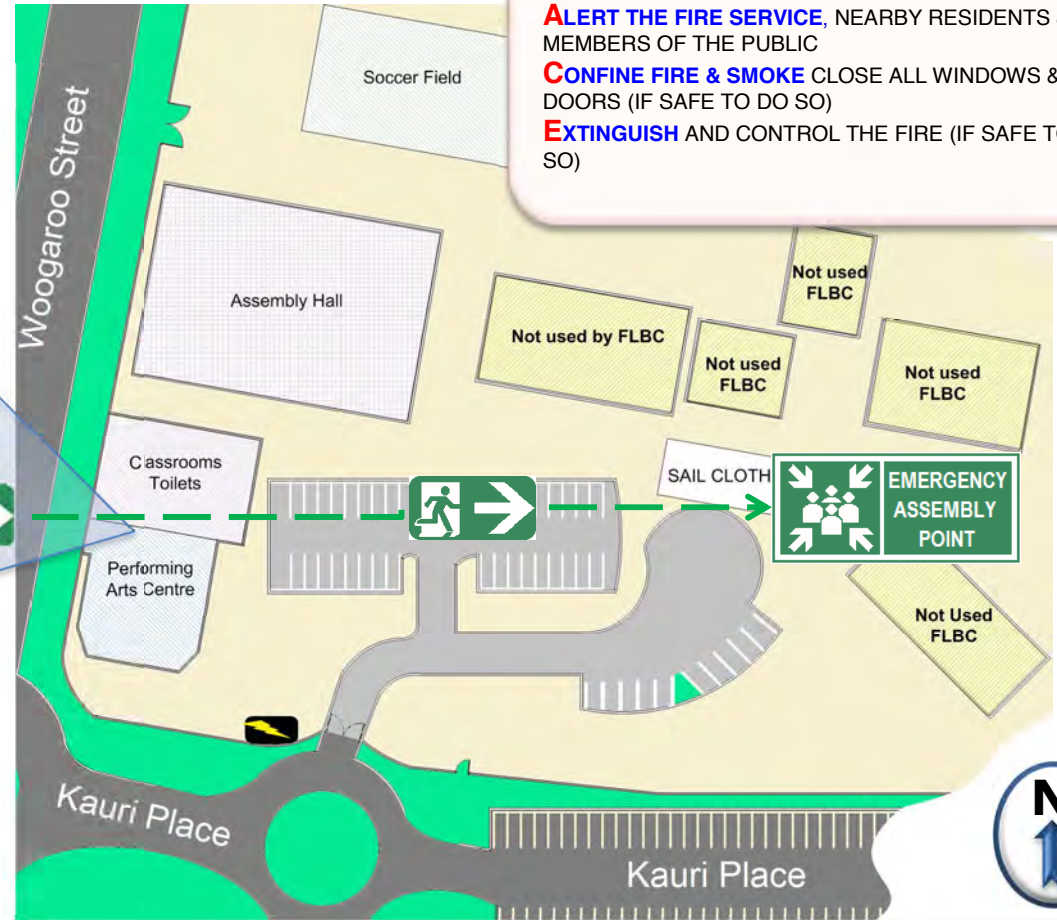
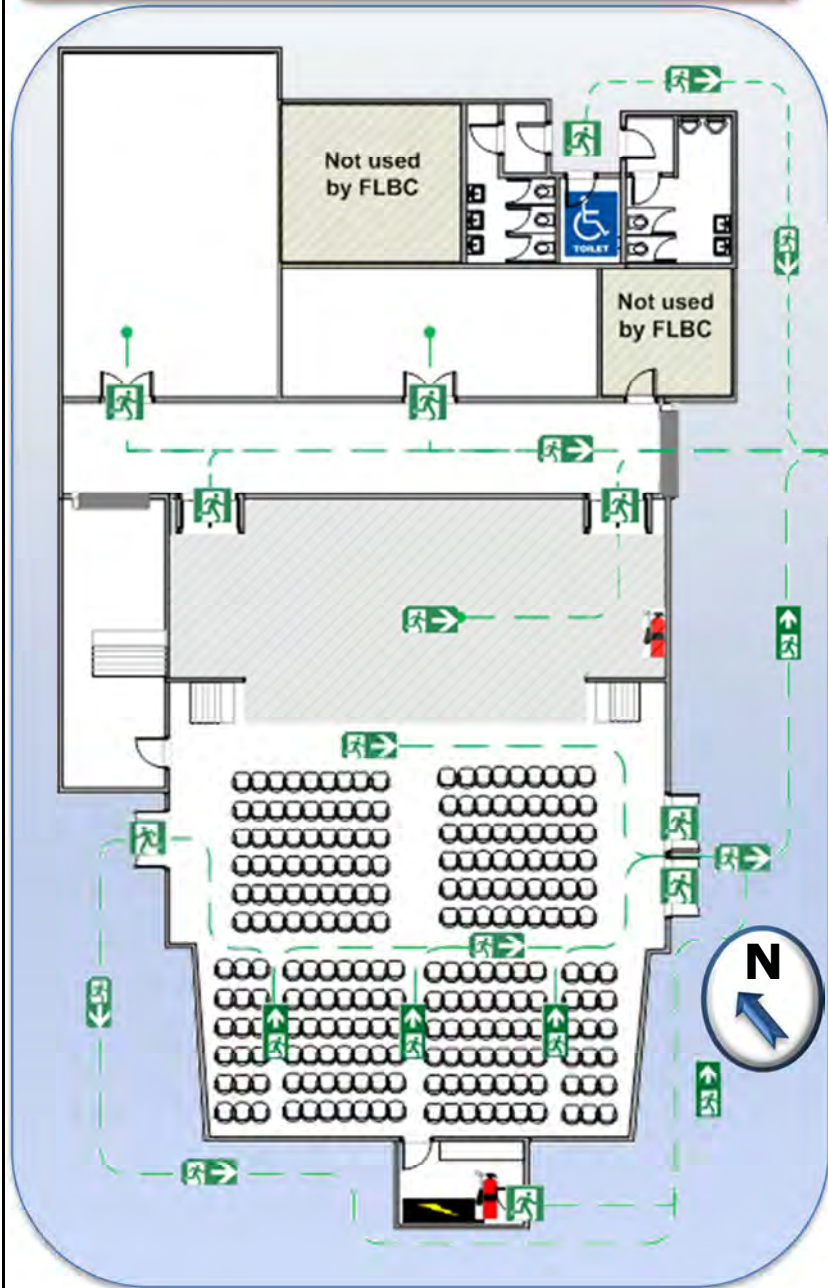


Emergency Evacuation Information For Forest Lake Baptist Church



- REMOVE PEOPLE** (IF IN DANGER TO THE ASSEMBLY POINT)
- ALERT THE FIRE SERVICE**, NEARBY RESIDENTS & MEMBERS OF THE PUBLIC
- CONFINE FIRE & SMOKE** CLOSE ALL WINDOWS & DOORS (IF SAFE TO DO SO)
- EXTINGUISH** AND CONTROL THE FIRE (IF SAFE TO DO SO)

IN THE EVENT OF AN EMERGENCY THE MOST SENIOR OR QUALIFIED LEADER SHALL TAKE CHARGE AND ACT AS CHIEF WARDEN. All directions from the Chief Warden must be complied with.

STAGE 1:- Removal of people from the immediate Danger Area
All personnel in the immediate danger area are to assemble a safe distance away from the fire and smoke.

STAGE 2:- Complete Evacuation of Entire Complex
Should the emergency necessitate **evacuation** of the whole building, the Leaders or the Fire Service will direct occupants from the safe place to the **ASSEMBLY AREA**

STAGE 3:- Determine missing persons
To be conducted as soon as possible and to ensure all Persons are accounted for. Report all missing persons to Emergency Services via acting Chief Warden

STAGE 4:- ASSEMBLY AREA
Remain at the Assembly Area until notified by Emergency Services that it is 'all clear:' to re-enter school.